

The background is a solid red color. It features several thin, white, abstract, curved lines that sweep across the frame, creating a sense of movement and depth. The lines are of varying lengths and curves, some starting from the top left and curving towards the bottom right, while others start from the bottom left and curve towards the top right.

FABIÁN MUHLIA

Visual artist



Trees in paradise

2002

Oil on canvas

60 x 90 cm



Good roots

1999

Oil on canvas

60 x 90 cm

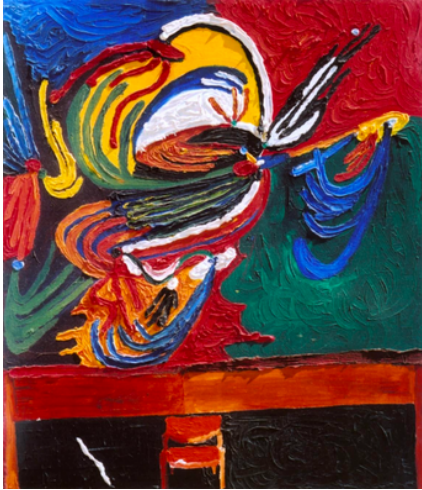


Untitled

1999

Oil on canvas

60 x 60 cm



Converting
outer vision into
inner mystical
expression
1999
Oil on canvas
60 x 40 cm



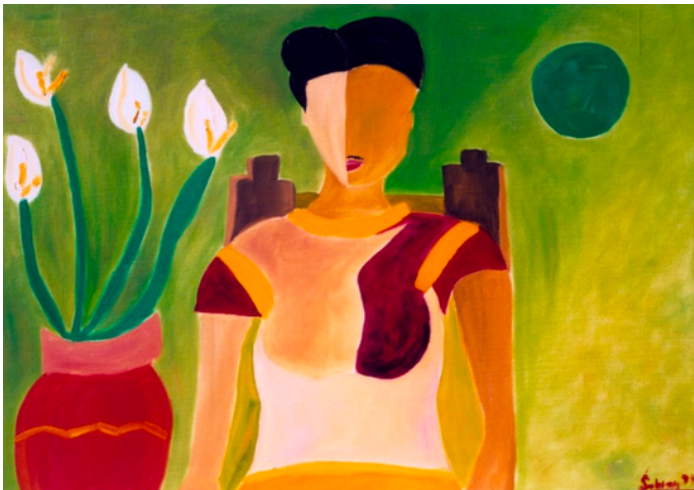
Allegory Mural
1998
Oil on canvas
3 x 3 meters



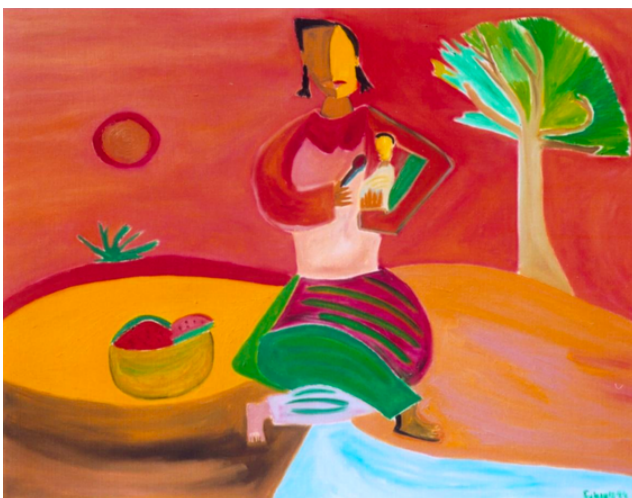
Self portrait
2002
Oil on canvas
60 x 90 cm



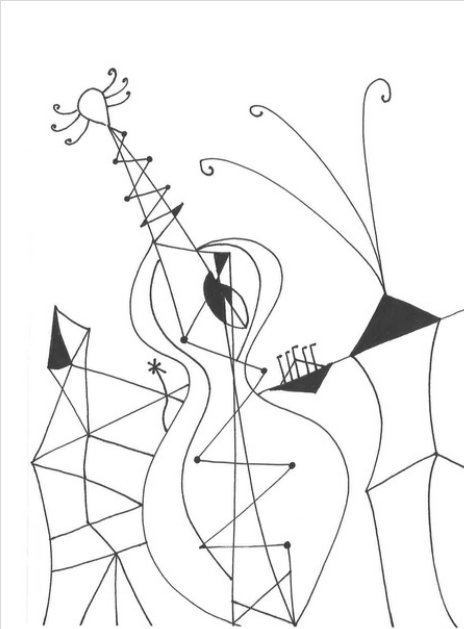
Living Nature with Chili Tree
1998
Oil on canvas
60 x 90 cm



Frida with Calla Lilies
1999
Oil on canvas
40 x 60 cm



Maternity
1999
Oil on Canvas
70 x 90 cm



Weaving the rhythm

2023

Ink on paper

30.5 x 23 cm

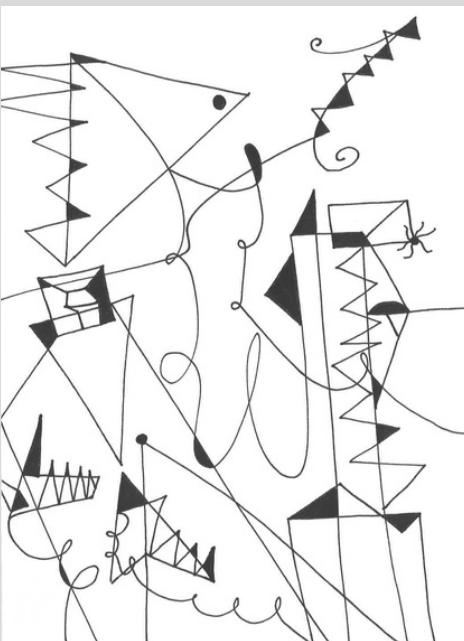


The cloister of the fish

2023

Ink on paper

30.5 x 23 cm

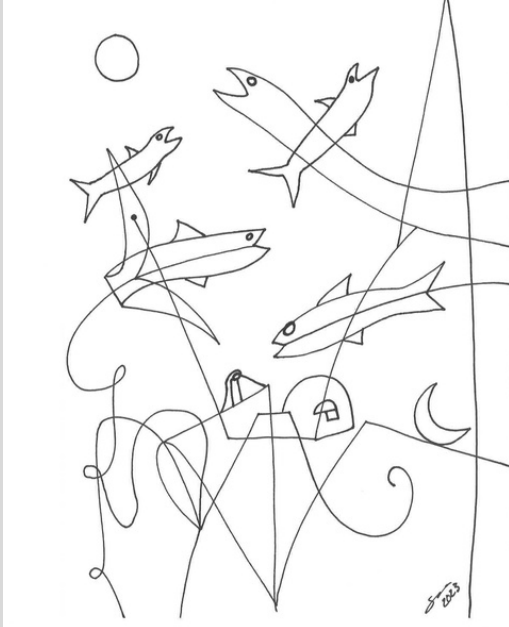


Kites coloring the wind

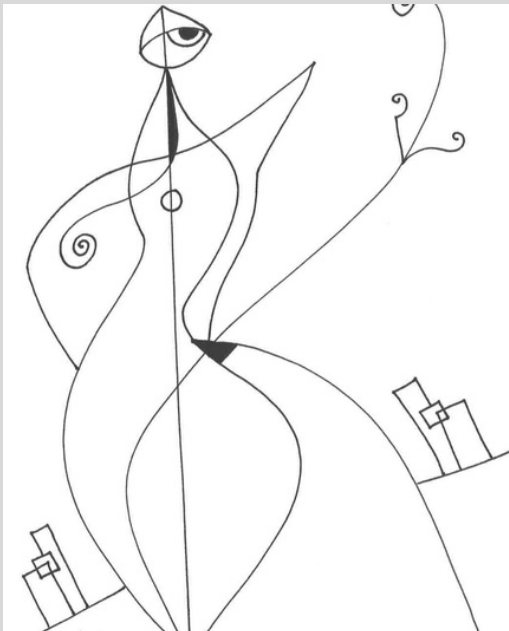
2023

Ink on paper

30.5 x 23 cm



Solar fish
2023
Ink on paper
30.5 x 23 cm



Women between cities
2023
Ink on paper
30.5 x 23 cm

CONTACT

Phone number: +52 612 155 6404

Mail: fabianmuhliaa@icloud.com

Facebook: [Fabián Muhlia Artista Plástico](#)

FABIÁN MUHLIA

Visual artist