

## CAPM-alpha estimation with robust regression vs. linear regression

### Estimación del CAPM-alpha con regresión robusta frente a la regresión lineal

*Received: March/16/2022; Accepted: September/ 06/2022; Posted: January/20/2023*

<https://doi.org/10.24275/uam/azc/dcsh/ae/2022v38n97/Samaniego>

*Angel Samaniego\**

#### ABSTRACT

Ordinary least squares (OLS) regression analysis seeks to find the relationship between variables under certain assumptions. If these assumptions are not met, the results are said to be not robust. Robust regression by optimization seeks to meet these assumptions. Both regression methods are contrasted using the following premise: past performance (CAPM-alpha) is a good estimator of future performance. Similar results were found for the study period, with linear regression outperforming robust regression. Empirically, active portfolios using the Treynor-Black methodology between 2000-2020 are used to contrast the regression methods.

**Keywords:** Appraisal; robust regression; portfolio selection; CAPM.

**JEL Classification:** G11; G17; C61.

#### RESUMEN

El análisis de regresión por mínimos cuadrados ordinarios busca encontrar la relación entre variables bajo ciertos supuestos. Y en caso de no cumplirse estos, se dice que sus resultados no son robustos. La regresión robusta mediante la optimización busca cumplir estos supuestos. Se contrastan ambos métodos de regresión utilizando la siguiente premisa: el desempeño (CAPM-alpha) pasado es un buen estimador del desempeño futuro. En el periodo de estudio se encontraron resultados muy similares, donde la regresión lineal sobresale sobre la regresión robusta. Empíricamente se utilizan portafolios activos mediante la metodología de Treynor-Black entre 2000-2020 para contrastar los métodos de regresión.

**Palabras clave:** Appraisal; regresión robusta; selección de carteras; CAPM.

**Clasificación JEL:** G11; G17; C61.



Esta obra está protegida bajo una Licencia Creative Commons Reconocimiento-NoComercial-SinObraDerivada 4.0 Internacional

#### INTRODUCTION

There is an extensive study of the Treynor-Black model in the literature. Some recent examples are the study of the behavior of the model under different market scenarios. Pannu (2021) contrasts the Treynor-Black model

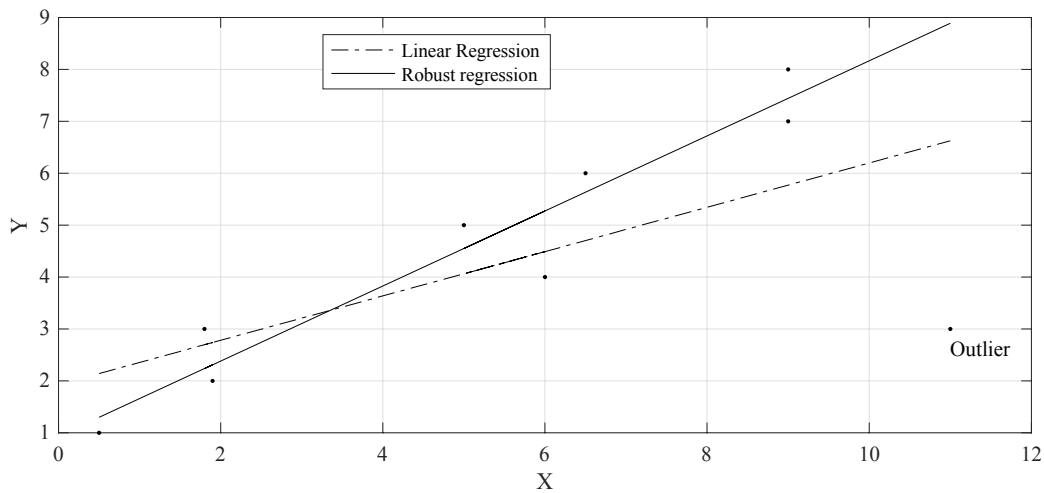
---

\* Instituto Tecnológico y de Estudios Superiores de Occidente, San Pedro Tlaquepaque, Jalisco, México. E-Mail: [asamanie@iteso.mx](mailto:asamanie@iteso.mx)

in bear and bull markets, obtaining better performances against naive portfolios. Another example, Srinivas & Shivaraj (2021) study the performance of the model with different measurement methods. This paper seeks to improve asset allocation using the Treynor-Black model, comparing results using robust regression vs. linear regression for long-term portfolios. Robust regression would be expected to improve the calculation of alpha, and hence performance. In this way, we seek to improve performance in this type of investments. Portfolio construction can be summarized in two steps 1) asset selection, and 2) asset allocation, the central theme of the paper. To exclude point 1 from the equation, the paper is limited to the Dow Jones Industrial Average index components (stocks) over the period 2000-2020. The use of different performance measures is out of scope, since the Treynor-Black model uses appraisal, see Amenc and Le Sourd (2003) for other options. Another limitation is the use of different factors, here we study the market (DJIA) and the 5 factors of Fama & French (2015), for the creation of other factors see Ladrón de Guevara & Torra, 2014. In addition, only contrast robust regression and linear regression.

As mentioned by Rousseeuw & Hubert (2018) "Real data often contain outliers, also known as outliers. These can spoil the resulting analysis, but they can also contain valuable information." Our motivation is to find out whether the information contained in the prices of the DJIA components is relevant or not relevant for portfolios using the Treynor-Black model in one-year investments to improve the performances of these portfolios. Linear regression models, when the errors have heavy tails, the distribution of these errors is not normal, so it does not meet this model specification. These outliers are removed because they can change the estimates of their coefficients. Robust regression uses a criterion to fit these observations to meet the linear model specification. See figure 1 for the visual difference between these two models, which results in different levels of alpha ( ) in the model developed by Sharpe in 1964 (CAPM, Capital Asset Pricing Model, equation 1).

**Figure 1**  
**Differences between robust regression and linear regression**



Source: own elaboration.

$$- = + - + \tag{1}$$

In the CAPM model the alpha is the performance of portfolio *i*. Alpha is that which is not related to the risk premium, measured by beta. The higher the alpha, the better the performance compared to portfolios

with similar risks, so we explain below how to adjust for this risk using appraisal. It is obtained from the linear relationship of the asset risk premiums with the market risk premiums. In our study the market is the Dow Jones Industrial Average (DJIA). One of the criticisms of this model is that portfolio performance can be explained by several factors. Fama & French (2015) propose five factors to explain its behavior (limitation of the study). Samaniego (2022) simulate portfolios formed by the components of the DJIA between 2000-2020, weighting them with their appraisal (Treynor & Black, 1973), whose calculation basis is the alpha. They found that the DJIA as the market in the CAPM model was better than the combination of the five factors proposed by Fama & French (2015). See table 1, where the portfolios formed with this methodology outperformed the DJIA by 66.9% in the period analyzed.

**Table 1**  
**Probability of outperforming the DJIA with different factor models: 2000-2020**

Alpha source	DJIA average annual return	Portfolio average annual return	Probability of outperforming the DJIA
CAPM (DJIA as the market)	6.3%	6.9%	58.0%
CAPM (DJIA as the market, $R^2 = 0.70$ )	7.8%	13.8%	66.9%
F&F (1 factor model)	6.2%	5.9%	56.6%
F&F (2 factor model)	6.2%	5.9%	56.9%
F&F (3 factor model)	6.2%	5.9%	56.9%
F&F (4 factor model)	6.2%	5.9%	56.8%
F&F (5 factor model)	6.2%	5.9%	56.7%

Source: Samaniego (2022).

Note: 5134 observations in each method.

The objective of this work is to improve the performance of the Treynor-Black model for one-year investments. To achieve this, this paper is limited to the study of the best regression model between two options: ordinary least squares regression and robust regression. These models impact the calculation of alpha used in the Treynor-Black model. The better the estimation, the better the performance of the one-year portfolios would be expected. Unlike Samaniego (2022), where the Treynor-Black model is contrasted over time, in this paper, using the same study period, two models for the calculation of alpha are studied for the selection of the best method to maximize performance. Considering the limitations of the study mentioned above.

There are several studies in different disciplines where robust regression is used (Yu & Yao, 2017; Farcomeni & Ventura, 2012; Erceg-Hurn & Mirosevich, 2008; Klein, 2020). And we can also find applications in the literature in the context of this study, the evaluation of investment portfolios (Cuthbertson *et al.*, 2010). That unlike this study they looked at returns rather than performance. They found that for UK and US equity mutual funds, the performance of winning funds is followed by winning returns, and the same is true for losing funds. They predict losing returns. The above with frequencies of less than one year. In our study we will keep investment periods of one year. The study is divided into three parts: methodology, results, and conclusions.

Besides this introduction the document is divided into two sections. The first section mentions the research methodology. The second section mentions the results obtained and finally, the conclusions are presented and gives future lines of research.

## I. METHODOLOGY

The research methodology does not seek to make new proposals to the methodologies used in the literature, the objective is to make empirical contrast between two regression methods that help to improve the performance of one-year portfolios that use the Treynor-Black method to assemble their portfolios (main contribution). To test the best regression model in the estimation of the CAPM-alpha as an estimator of future performance. The Treynor-Black (1973) methodology is used in its active portfolio part and uses appraisal as measure of performance. This methodology proposes to divide the portfolio in two: active portfolio and portfolio indexed to a reference index. Only the active portfolio is used. Its calculation depends on the appraisal which is related to alpha. If this alpha were a good estimator of future performance, better returns would be expected compared to the benchmark index, DJIA. Portfolios are assembled between 2000-2020 taking as a reference the components of the DJIA in history. The Treynor-Black (1973) methodology selects and weights these assets through equation 2 and 3. In equation 2 the appraisal is calculated, which is the ratio of the abnormal return (or performance) of the asset, expected to be positive. In the case of being zero, it indicates a performance like its benchmark (in this study it is the DJIA). It is divided by the variance of the residuals of the regression, indicating the asset-specific risk or risk assumed to obtain the alpha. For example, if a portfolio is indexed to its benchmark, its alpha and specific risk are expected to be zero. The higher the appraisal, the better the performance. Using ordinary least squares regression and robust regression, alpha is calculated, and portfolios are simulated every day with an investment period of one year. 5134 portfolios are simulated, and 154020 (5134 x 30) alphas are calculated with each of the regression methods to be tested. The real data were taken from FactSet of 57 assets contained in the DJIA in the study period (see appendix, table 5).

$$= \frac{\text{appraisal}}{\text{variance}} \quad (2)$$

Equation 2 shows the calculation of the proportion to invest in each asset. The divisor is the sum of the appraisals of the assets contained in the portfolio. And the dividend is the appraisal of the asset. In this way, performance is adjusted to the risk assumed. For further details see Amenc and Le Sourd (2003).

$$= \frac{\text{appraisal}}{\sum_{i=1}^n \text{appraisal}_i} \quad (3)$$

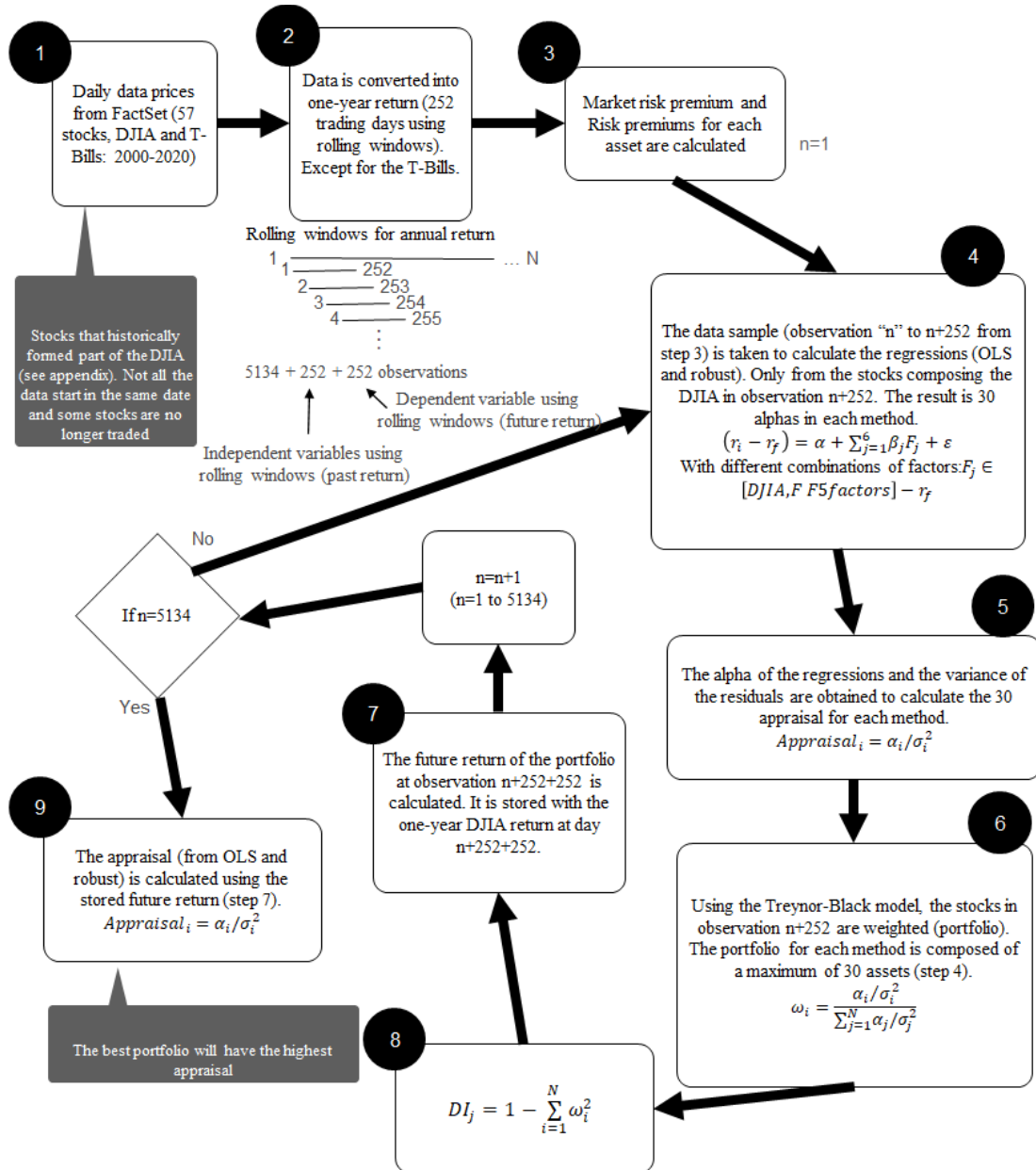
Not all observations will have positive alphas, which indicate a certain level of investment. If the investment grade is in few assets, it would represent higher risk. Likewise, when investing in several assets and weighting a single asset with the largest share of investment, it also represents a higher risk. The better the performance, the more the asset will be weighted.

Woerheide & Persson (1992) are used to measure the degree of diversification. The higher the degree of diversification, the better (equation 4). This equation does not consider correlations, which the Treynor-Black model does not either, its limitation would be to weight correlated assets. What it does consider is the amount of assets contained in a portfolio and the investment percentage, it would be expected that portfolios with few assets or portfolios where more weighting is given to few assets would have a low DI. Where it is obtained with equation 3.

$$= 1 - \frac{\text{appraisal}^2}{\sum_{i=1}^n \text{appraisal}_i^2} \quad (4)$$

The following section explains the simulation results of the 5134 portfolios, excluding the non-investment periods. See Figure 2 for the entire process in the simulations. FactSet is used to obtain the data and its processing is performed in Matlab.

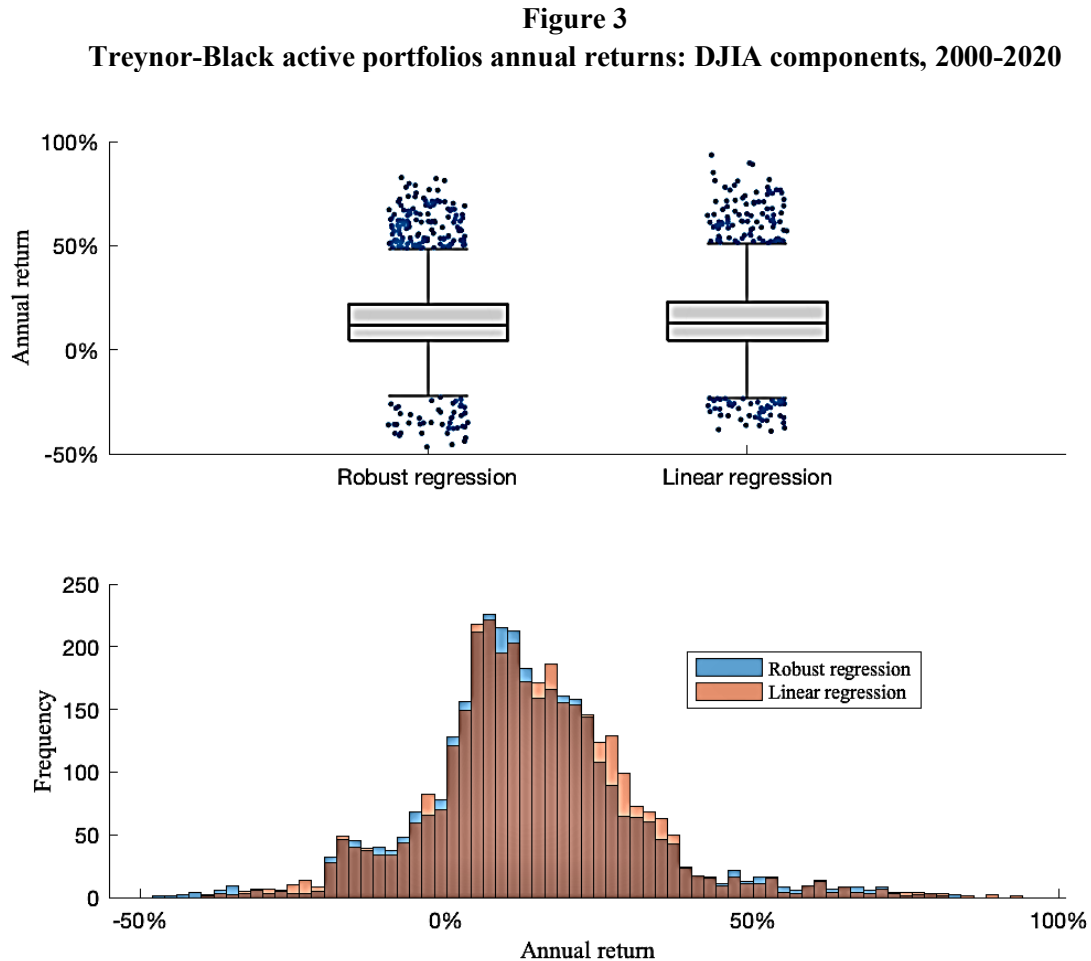
**Figure 2**  
**Appraisal and Diversification Index calculations**



Source: own elaboration.

## II. RESULTS

For the same investment period (one year) and the same study period (2000-2020), figure 3 compares the annual returns of the simulations for each regression method.



Source: own elaboration and data from FactSet.

Since the Treynor-Black model only weights assets with positive alpha, there are non-investment periods for both methods. This will be taken as part of the investment strategy where sometimes are not invested and will be taken as zero return. To compare each strategy or regression method with the DJIA, only the observations where there is investment will be taken. The average returns of the benchmark index (DJIA) are different, 7.8% and 7.9% (OLS and robust regression, see table 2) which is lower than the return obtained with Treynor-Black (13.8% and 13.3%). We deduce that both methods outperform the DJIA in the study period but the volatility for both methods is higher than that obtained in one-year DJIA investments. A comparison of the two regression methods is made later in this section.

**Table 2**  
**CAPM-alpha source: robust regression vs. linear regression.**

Alpha source	DJIA average annual return	Treynor-Black average annual return	DJIA volatility	Treynor-Black volatility	Probability of outperforming the DJIA
Linear regression (OLS)	7.8%	13.8%	15.3%	16.8%	66.9%
Robust regression	7.9%	13.3%	15.2%	17.0%	66.8%

Source: own elaboration and data from FactSet.

Note: accepted alpha has  $R^2 = 0.70$  and p-value less than/equal to 0.05. It is calculated for each of the 30 assets at 5134 points in time. For each day, assets with positive alpha (significant level) are weighted according to their valuation. There may be observations with no investment.

As in Samaniego (2022), only regression models are used with  $R^2 = 0.70$ , P-value = 0.05 for each component. Table 2 studies appraisal-weighted portfolios, and table 3 analyzes individual stocks. We calculate 154 020 (5 134 x 30) alphas with each method obtained 9.8% and 10.1% of alphas greater than zero. OLS outperforms the DJIA with 55.7% where 72.5% are greater than 0% annual returns. The differential in probability of outperforming the DJIA between the two tables is 11.2% (66.9%-55.7%). We can say that this differential is the contribution of diversification by means of equation 2.

**Table 3**  
**Probability of outperforming the DJIA vs. each stock.**

Alpha source	Probability of outperforming the DJIA	Probability of returns greater than zero	observations	Alpha>0
Linear regression (OLS)	55.7%	72.5%	15 137	9.8%
Robust regression	55.4%	72.1%	15 565	10.1%

Source: own elaboration.

Note:  $R^2 = 0.70$  and P-value = 0.05. It is possible that there are observations without investment.

Table 4 calculates the appraisal (Equation 2) using the annual yields in the simulation (Figure 3). Where the OLS methodology is slightly superior to using robust regression, the appraisal is calculated as follows.

**Table 4**  
**Performance (appraisal)**

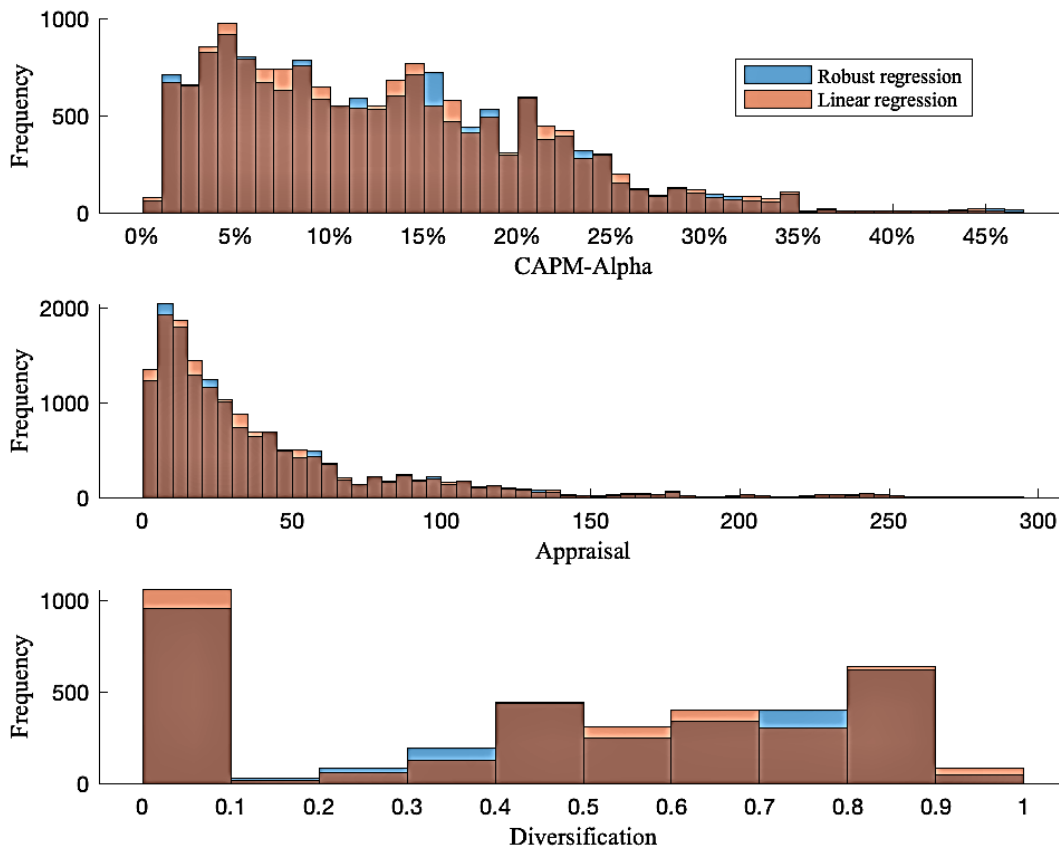
	Estimate	Standard error	T-statistic	P-value	Appraisal
Linear regression (R-squared 0.496)					5.471
<i>Alpha</i>	0.078	0.002	34.045	0.000	
<i>Beta</i>	0.773	0.013	58.104	0.000	

	Estimate	Standard error	T-statistic	P-value	Appraisal
Robust regression (R-squared 0.534)					5.047
<i>Alpha</i>	0.068	0.002	30.194	0.000	
<i>Beta</i>	0.817	0.013	62.121	0.000	

Source: own elaboration.

The distributions of the CAPM-alpha, appraisal, and diversification index (equation 4) are very similar for both methods (see figure 4). Presenting the same problem in relation to diversification. There are many observations where the portfolio has a  $DI < 0.1$ , because it only invests in a single asset. Of the 30 regressions performed on each observation, it finds only one asset with  $\alpha > 0$ ,  $R^2 = 0.70$  and P-value 0.05 (approximately 1,000 times, 29% of the total). This represents a high risk as it is invested in a single asset.

**Figure 4**  
Trenor-Black active portfolios using a different type of alpha source: DJIA components, 2000-2020



Source: own elaboration and data from FactSet.

## CONCLUSION

In the study period both regression methods outperform the DJIA, with risk premia around 6%. This with a small increase in volatility below 2%. So, managers or investors where the investment period is one year and they seek to outperform the DJIA, could use both methods to weight the selected assets in the portfolio. Seeking to amplify these risk premia, the paper compared two regression models: the OLS model and the robust regression. The OLS model was superior to robust regression measured by appraisal performance, as does the Treynor-Black model. Having an alpha differential of 1% and an appraisal differential of 0.4. The probabilities of having positive returns in the 5 134 observations, both for the DJIA, Treynor-Black with OLS and Treynor-Black with robust regression is similar at around 72%. Thus, the regression methods increase the risk premium and do not increase the probability of having returns greater than zero. Analyzing the diversification coefficient, we observe periods where the DI is 0.1, which indicates one of two options, in those investment periods the Treynor-Black model (independent of the regression method): 1) contains few assets, 2) mostly few assets are weighted. This is because the model found few assets in which to invest (positive alpha) or the appraisal spread on few assets is very high. It leads us to conclude, to put the model into practice it needs to analyze more assets than the 30 components of the DJIA. Several studies can be derived from the paper, for example, to study indices with components greater than 30, to look for factors that better explain performance or to use other linear or non-linear regression models.

## REFERENCES

- Amenc, N. and V. Le Sourd (2003). *Portfolio theory and performance analysis*. Wiley.
- Cuthbertson, K., Nitzsche, D., & O'Sullivan, N. (2010). Mutual fund performance: Measurement and Evidence 1. *Financial Markets, Institutions & Instruments*, Vol. 19, no. 2, pp. 95-187. <https://doi.org/10.1111/j.1468-0416.2010.00156.x>
- Erceg-Hurn, D. M., & Mirosevich, V. M. (2008). Modern robust statistical methods: an easy way to maximize the accuracy and power of your research. *American Psychologist*, Vol. 63, no. 7, pp. 591-601. <https://doi.org/10.1037/0003-066x.63.7.591>
- Fama, E. F., & French, K. R. (2015). A five-factor asset pricing model. *Journal of financial economics*, Vol. 116, no. 1, pp. 1-22. <https://doi.org/10.1016/j.jfineco.2014.10.010>
- Farcomeni, A., & Ventura, L. (2012). An overview of robust methods in medical research. *Statistical Methods in Medical Research*, Vol. 21, no. 2, pp.111-133. <https://doi.org/10.1177/0962280210385865>
- Klein, T. (2020). Event Studies in Merger Analysis: Review and an Application Using US TNIC Data. *ECONSTOR Working Paper* No. TI 2020-005/VII. Amsterdam Law School Research Paper, October. <https://doi.org/10.2139/ssrn.3517189>
- Ladrón de Guevara, R. & Torra, S. (2014). Estimation of the underlying structure of systematic risk with the use of principal component analysis and factor analysis. *Contaduría y Administración*, Vol. 59, No. 3, pp. 197-234. [https://doi.org/10.1016/s0186-1042\(14\)71270-7](https://doi.org/10.1016/s0186-1042(14)71270-7)
- Pannu, Gurkamal S. (2021). *Hedge Fund Performance with the Treynor-Black Model*. [Undergraduate Theses] University of Dayton. [https://ecommons.udayton.edu/uhp\\_theses/330](https://ecommons.udayton.edu/uhp_theses/330)
- Rousseeuw, P. J., & Hubert, M. (2018). Anomaly detection by robust statistics. *Wiley Interdisciplinary Reviews: Data Mining and Knowledge Discovery*, Vol. 8, no. 2, pp. 1-14. <https://doi.org/10.1002/widm.1236>
- Samaniego, A. (2022). Can alpha predict future performance? [unpublished manuscript]. *Departamento de Economía, Administración y Mercadología (DEAM), ITESO*.

- Sharpe, William F. (1964). Capital asset prices: A theory of market equilibrium under conditions of risk. *Journal of Finance*, Vol. 19, no. 3, pp. 425-442. <https://doi.org/10.2307/2977928>
- Srinivas, K. R. & Shivaraj, B. (2021). Construction of Optimal Portfolio-Treynor-Black Model: A study With Reference to Selected Exchange Traded Funds. *Gorteria Journal*, Vol. 34(2): 90-101. <https://gorteria.com/volume-34-issue-2-2021/>
- Treynor, J. L., & Black, F. (1973). How to use security analysis to improve portfolio selection. *The journal of business*, Vol. 46, no. 1, pp. 66-86. <https://doi.org/10.1002/9781119196679.ch60>
- Woerheide, W., & Persson, D. (1992). An index of portfolio diversification. *Financial services review*, Vol. 2, no. 2, pp. 73-85. [https://doi.org/10.1016/1057-0810\(92\)90003-u](https://doi.org/10.1016/1057-0810(92)90003-u)
- Yu, C., & Yao, W. (2017). Robust linear regression: A review and comparison. *Communications in Statistics-Simulation and Computation*, Vol. 46, no. 8, pp. 6261-6282. <https://doi.org/10.1080/03610918.2016.1202271>

## APPENDIX

**Table 5**  
**Dow Jones Industrial Average components: 2000-2020.**

#	Component	FACTSET	#	Component	FACTSET
1	Alcoa Inc.	AA-US	30	JPMorgan Chase & Co.	JPM-US
2	Apple Inc.	AAPL-US	31	The Coca-Cola Company	KO-US
3	American International Group, Inc.	AIG-US	32	McDonald's Corporation	MCD-US
4	Amgen Inc.	AMGN-US	33	Kraft Foods Inc.	MDLZ-US
5	American Express Company	AXP-US	34	3M Company	MMM-US
6	The Boeing Company	BA-US	35	Minnesota Mining & Manufacturing Company	MMM-US
7	Bank of America Corporation	BAC-US	36	Altria Group Incorporated	MO-US
8	Citigroup Inc.	C-US	37	Philip Morris Companies Inc.	MO-US
9	Caterpillar Inc.	CAT-US	38	Merck & Co., Inc.	MRK-US
10	<a href="https://www.salesforce.com">salesforce.com</a> , Inc.	CRM-US	39	Microsoft Corporation	MSFT-US
11	Cisco Systems, Inc.	CSCO-US	40	General Motors Corporation	MTLQQ-US
12	Chevron Corporation	CVX-US	41	Nike, Inc.	NKE-US
13	DowDuPont Inc.	DD-US	42	Pfizer Inc.	PFE-US
14	E.I. du Pont de Nemours & Company	DD.XX1-US	43	The Procter & Gamble Company	PG-US
15	The Walt Disney Company	DIS-US	44	Raytheon Technologies Corporation	RTX-US
16	Dow Inc.	DOW-US	45	United Technologies Corporation	RTX-US
17	Eastman Kodak Company	EKDKQ-US	46	AT&T Corporation	T.XX1-US
18	General Electric Company	GE-US	47	SBC Communications Inc.	T-US
19	The Goldman Sachs Group, Inc.	GS-US	48	AT&T Inc.	T-US
20	The Home Depot, Inc.	HD-US	49	The Travelers Companies, Inc.	TRV-US
21	AlliedSignal Incorporated	HON-US	50	UnitedHealth Group Inc.	UNH-US

---

22	Honeywell International	HON-US	51	Visa Inc.	V-US
23	Honeywell International Inc.	HON-US	52	Verizon Communications Inc.	VZ-US
24	Hewlett-Packard Company	HPQ-US	53	Walgreens Boots Alliance, Inc.	WBA-US
25	International Business Machines Corporation	IBM-US	54	Walmart Inc.	WMT-US
26	Intel Corporation	INTC-US	55	Wal-Mart Stores, Inc.	WMT-US
27	International Paper Company	IP-US	56	Exxon Mobil Corporation	XOM-US
28	Johnson & Johnson	JNJ-US	57	Exxon Corporation	XOM-US
29	J.P. Morgan & Company	JPM.XX9-US			

---

Source: FactSet

